

Senate Transportation  
Committee

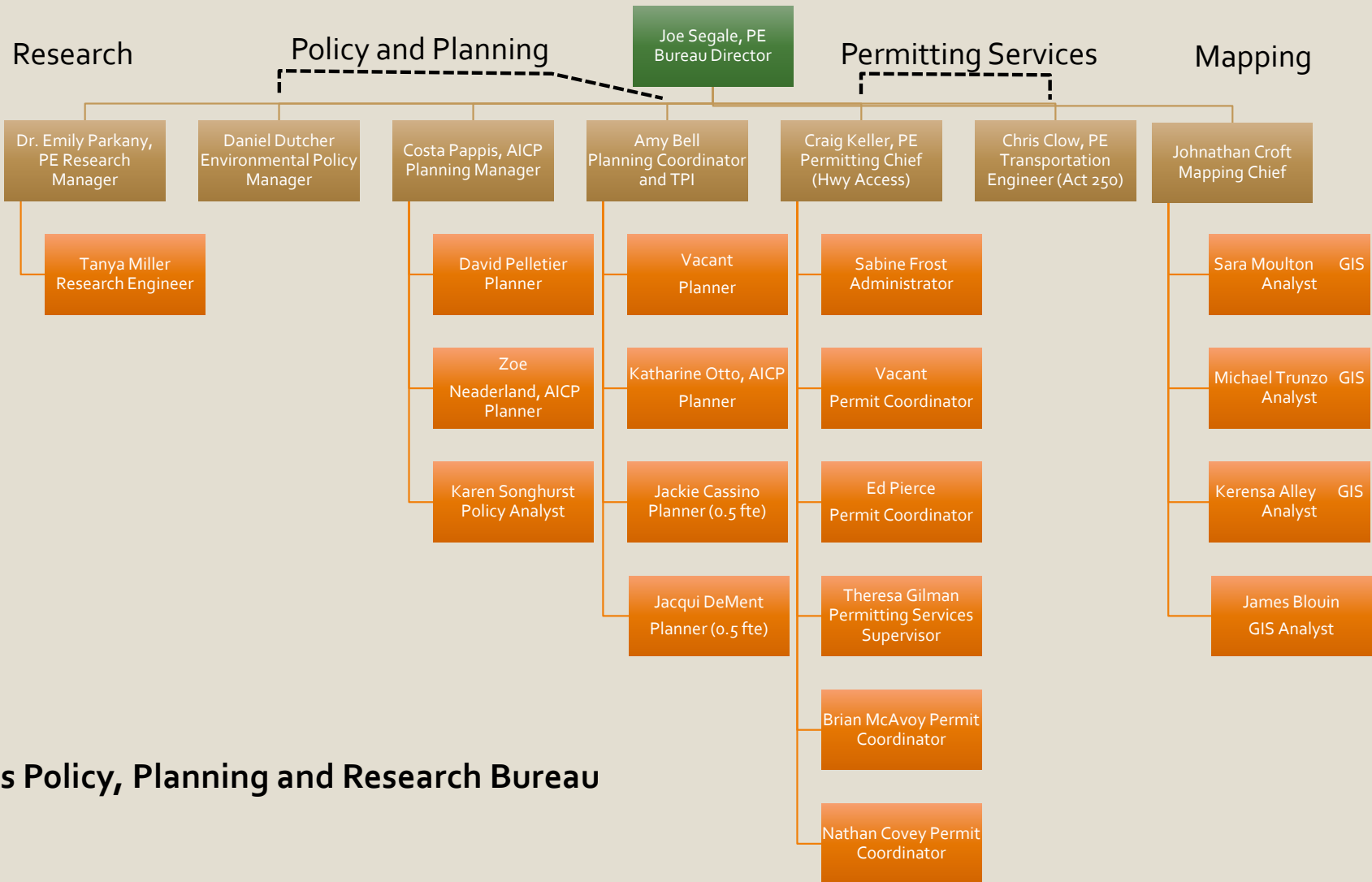
January 20, 2021

Joe Segale, P.E./PTP

Policy, Planning &  
Research Bureau Director

# POLICY, PLANNING AND RESEARCH BUREAU OVERVIEW





**VTrans Policy, Planning and Research Bureau**

# TRANSPORTATION PLANNING INITIATIVE

## TRANSPORTATION PLANNING INITIATIVE

The TPI program's mission is to enhance cooperative decision-making among state, regional, and local partners about the transportation system. It has five main objectives, each covering a variety of projects.

Here are a few highlights from FY 2020.

**1**

Enhance Cooperation & Coordination Between VTrans, RPCs & Municipalities

**244** municipalities actively engaged in regional transportation planning

**80** Transportation Advisory Committee (TAC) meetings

**90** non-municipal representatives actively engaged via TAC meetings  
RAIL, AIR, PUBLIC TRANSIT, BIKE/PED, DISABILITY RIGHTS, CHAMBER OF COMMERCE/ECONOMIC DEVELOPMENT INTEREST GROUPS

**2**

Better Connect Federal, Regional and Statewide Transportation Planning

**60** coordination activities in support of regional public transit providers

**24** VTrans committees that involve RPC staff participation



**3**

Provides Technical Assistance to Municipalities

**55** municipal transportation related feasibility/project definition studies completed/undertaken

**123** municipalities assisted with transportation related grants

**50%** of transportation budget spent on municipal technical assistance

**75** road inventories conducted in support of Municipal Roads General Permit

**4**

Advances VTrans Strategic & Long-Range Transportation Plans

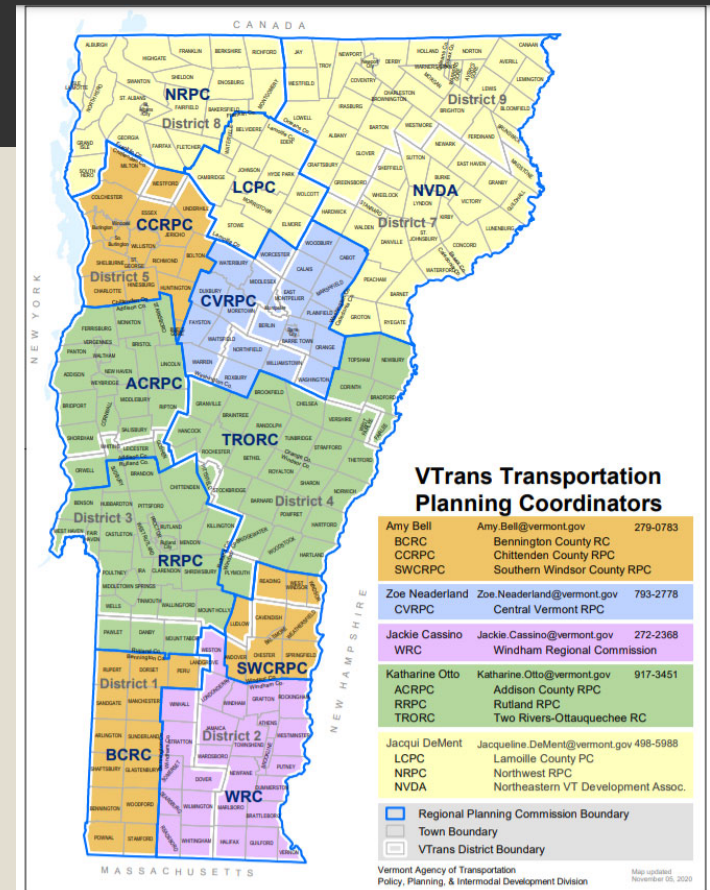
**599** data collection activities conducted for VTrans

**Note:** Due to the advent of the COVID-19 State of Emergency and related changes in operations and communications necessitated by compliance with the Executive Orders, fluctuations in indicators involving public meetings and outreach to municipalities should be anticipated.

**5**

Provides a Mechanism for Improved Public Outreach & Education

Objective 5 shares many cross-cutting performance measures with 1-4



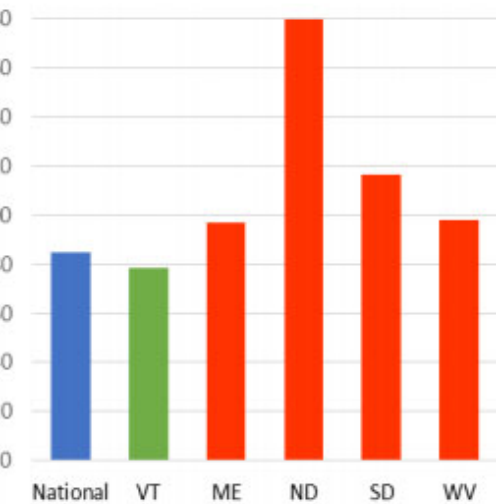
# POLICY & PLANNING

- Legislative Studies
- Federal Grant Applications
- Better Connections Grant Program
- Automated Vehicle Testing Coordination
- VT 9 and VT 30 Corridor Management Plans Underway
- Bike/Ped, Rail, Freight, and Aviation Plans Underway
- Flood Resilience Planning Tool
- National and International Coordination
- MAP-21/FAST Act Rule Making Monitoring and Implementation

## GUIDANCE DOCUMENT: DEMONSTRATION PROJECTS IN STATE HIGHWAY RIGHT OF WAY

JULY 2020 DRAFT





E-2. Per Capita Transportation Sector Energy Consumption, 2015 (U.S. EIA 2017)



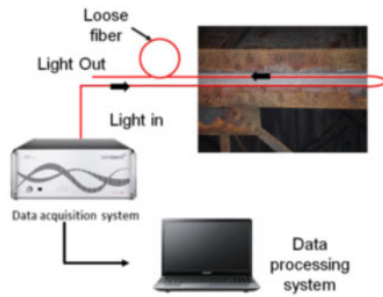
# ENVIRONMENTAL POLICY

- Electric Vehicle Incentive Program
- MileageSmart and Emissions Repair Programs
- Assistance with VW Settlement EV Charging Grants
- VT Transportation Energy Profile
- Climate Change Policy and Interagency Coordination
- Water Quality
- Wildlife Planning





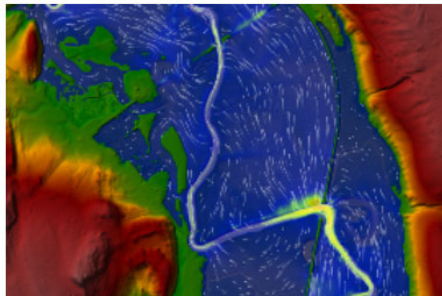
**Radio Frequency Identification (RFID) Technology for Asset Management**



**Monitoring the Structural Health of Bridges using Fiber Optic Sensing Technology**



**Revolutionizing DOT operations with Unmanned Aerial Systems (UAS)**



**Identifying Sensitive Structural and Hydraulic Parameters in a Bridge-Stream Network**

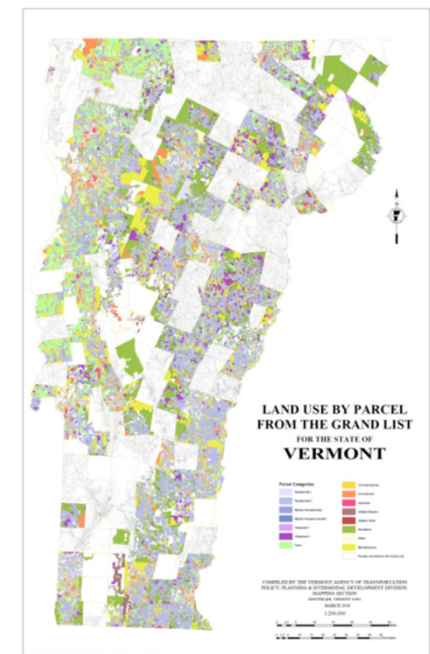
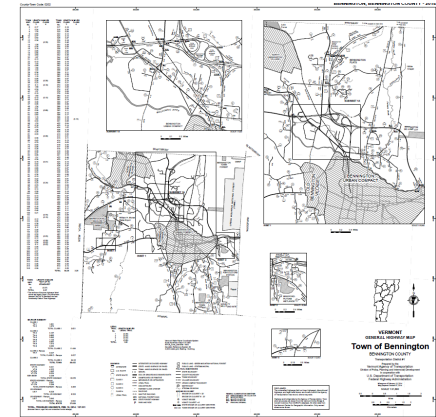
# RESEARCH SECTION

- Federally mandated research program
- Five research projects completed this year, Nine active projects
- Technical Transfer through VTrans Research Symposium, Newsletter
- Transportation Research Collaborative, expanding to other VT Institutions
- New England Transportation Consortium, TRB and AASHTO participation



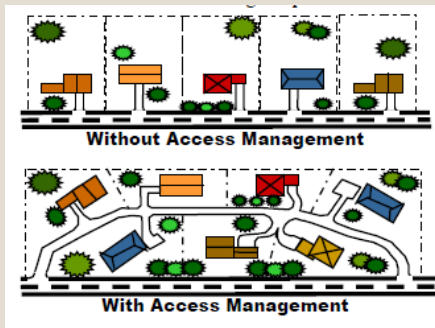
# MAPPING SECTION

- Town Highway Maps
- Annual Town Highway Mileage Certificates
- Maintains statewide road centerline GIS data used by municipalities, regions and state
- GIS and data analysis to support other agency activities
- Town highway reclassification

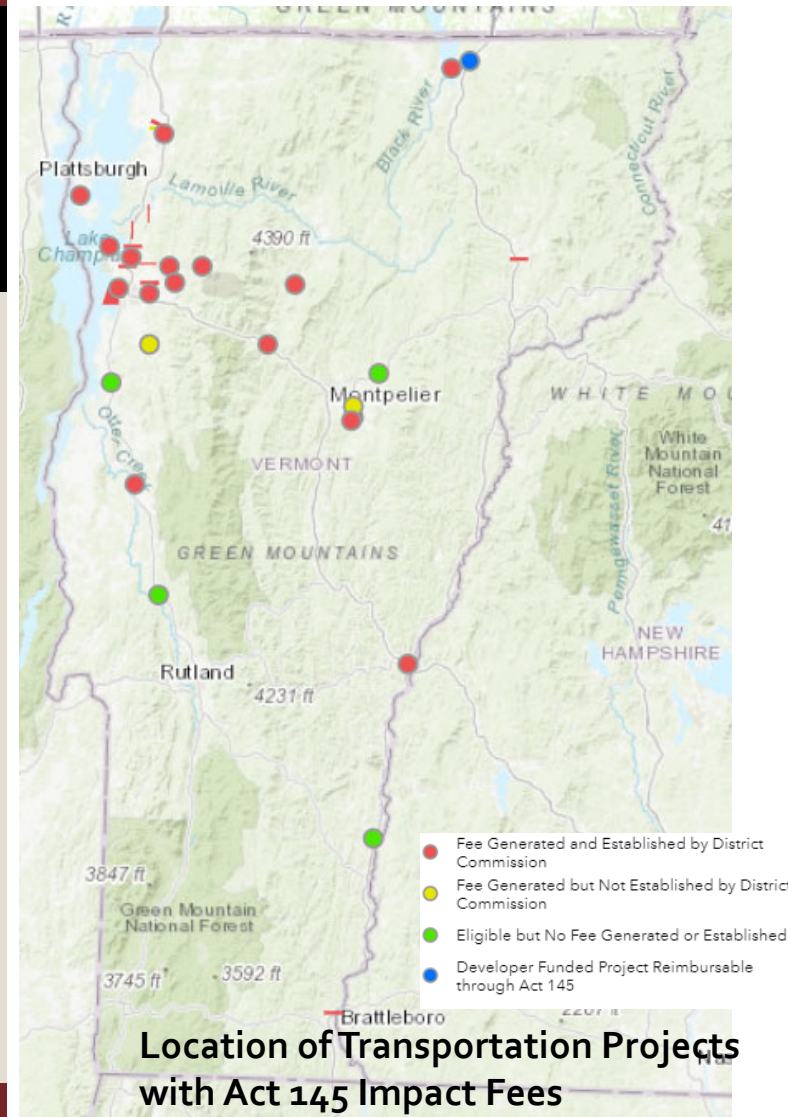


# PERMITTING SERVICES

- Permits to Work in State Highway Right-of-Way (Section 1111 Permit)



- Act 250 Application Review
- Act 145 (2014) Transportation Impact Fee management





Contact	Topics
<p>Joe Segale, P.E./PTP  Policy, Planning and Research Bureau Director  802-477-2365  <a href="mailto:Joe.segale@vermont.gov">Joe.segale@vermont.gov</a></p>	<ul style="list-style-type: none"> <li>• Bureau Management</li> <li>• Flood resilience</li> <li>• Corridor Planning</li> <li>• Automated Vehicles</li> </ul>
<p>Costa Pappis, CPM, AICP CTP  Policy &amp; Planning Manager  802-828-5790  <a href="mailto:costa.pppis@vermont.gov">costa.pppis@vermont.gov</a></p>	<ul style="list-style-type: none"> <li>• Statewide Transportation Planning</li> <li>• Modal Plans</li> <li>• Grants</li> <li>• National &amp; International Policy Coordination</li> </ul>
<p>Amy Bell  Planning Coordinator  802-828-2678  <a href="mailto:Amy.bell@vermont.gov">Amy.bell@vermont.gov</a></p>	<ul style="list-style-type: none"> <li>• Transportation Planning Initiative</li> <li>• Chittenden County RPC and Metropolitan Planning Organization Representative</li> <li>• State Transportation Improvement Program</li> </ul>
<p>Daniel D. Dutcher  Environmental Policy Manager  802-498-4540  <a href="mailto:daniel.dutcher@vermont.gov">daniel.dutcher@vermont.gov</a></p>	<ul style="list-style-type: none"> <li>• Climate Change</li> <li>• Electric Vehicles</li> <li>• Wildlife</li> <li>• Water Quality</li> <li>• Air Quality</li> </ul>
<p>Johnathan Croft  Mapping Section Chief  802-828-2600  <a href="mailto:johnathan.croft@vermont.gov">johnathan.croft@vermont.gov</a></p>	<ul style="list-style-type: none"> <li>• Town highway maps and mileage certification</li> <li>• Roadway re-classification</li> <li>• GIS for Transportation</li> </ul>
<p>Craig S. Keller, P.E.  Chief of Permitting Services  802-279-1152  <a href="mailto:craig.keller@vermont.gov">craig.keller@vermont.gov</a></p>	<ul style="list-style-type: none"> <li>• Permits to Work in State ROW (Section 1111 Permit)</li> </ul>
<p>Christopher Clow, P.E.  Transportation Engineer  802-828-0513  <a href="mailto:christopher.clow@vermont.gov">christopher.clow@vermont.gov</a></p>	<ul style="list-style-type: none"> <li>• Act 250 Traffic Impact Study Review</li> <li>• Act 145 Transportation Impact Fees</li> </ul>
<p>Dr. Emily Parkany, P.E.  Research Manager  802-272-6862  <a href="mailto:emily.parkany@vermont.gov">emily.parkany@vermont.gov</a></p>	<ul style="list-style-type: none"> <li>• Agency research projects</li> <li>• UVM Research Project Management</li> <li>• Northeast and US National Research Programs</li> </ul>